

PHASE 1 – CONSTRUCTION

SOUTHEAST IOWA REGIONAL AIRPORT AUTHORITY

ATTENTION

AIRPORT PARKING DURING CONSTRUCTION

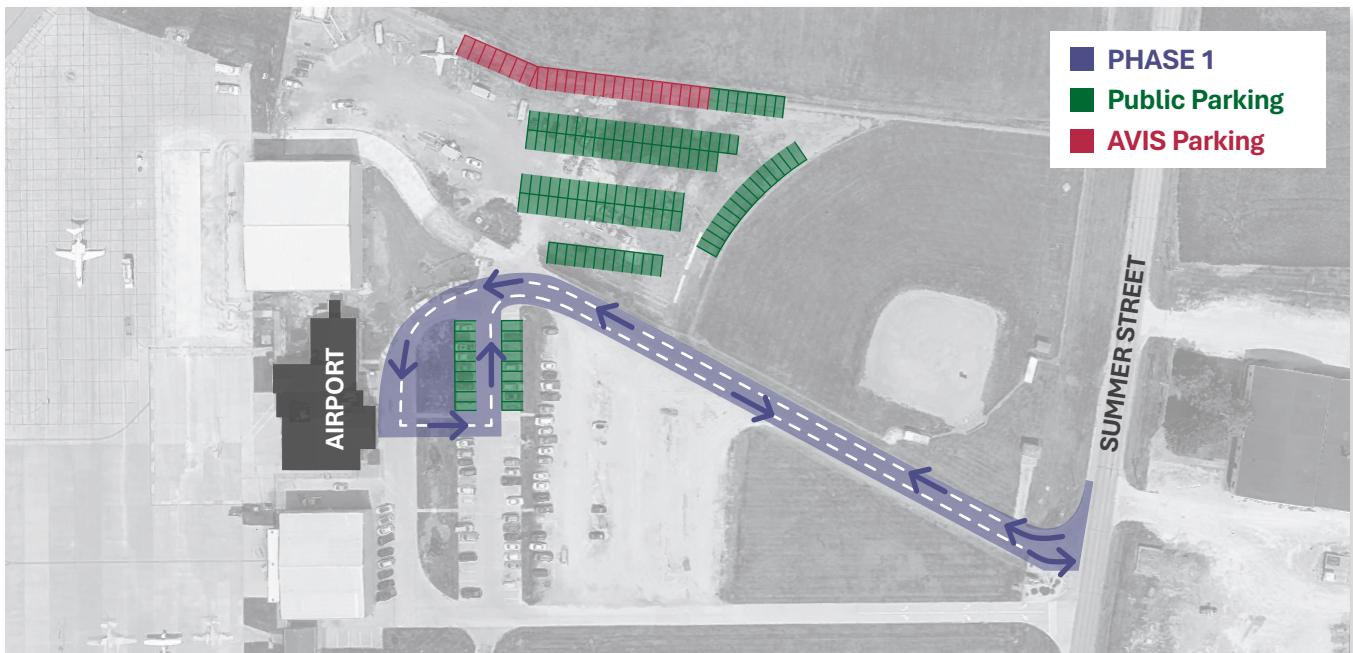
**PLEASE BE PATIENT AND PARDON THE INCONVENIENCE OF CONSTRUCTION.
WE ARE WORKING TO GIVE YOU, OUR CUSTOMERS, A BETTER FACILITY.**

ESTIMATED CONSTRUCTION START DATE: April 1, 2026

ESTIMATED CONSTRUCTION END DATE: November 1, 2026

WHAT TO EXPECT:

- **PLEASE FOLLOW SIGNAGE FOR PUBLIC PARKING. THOSE PARKED IN UNDESIGNATED AREAS WILL BE TOWED.**
- Pick up, drop off, parking locations, and access to Summer Street may have temporarily changed.
- Avis's rental lot and key drop has temporarily changed.
- **PHASE 2 – PUBLIC PARKING WILL CHANGE TO UTILIZE THE THE NEW PARKING LOT.**



For questions, contact the Southeast Iowa Regional Airport or McClure at the numbers below.

Thank you for your cooperation as we work together to improve the experience at the Airport!



Sara Sandburg

319.754.1414

Ethan Gerst

319.572.5257



Scott Smith

515.303.8247

Michael Guajardo

708.969.0235