

Welcome To The Southeast Iowa Regional Airport (BRL) Drivers Training Program



**Click Here
To Begin Training**

- To maintain safety at the airport, everyone must have a basic knowledge of airport and aircraft operations.



[Click To Continue](#)

Awareness

- Driving on an airport requires drivers to be patient, observant and unassuming.
- Weather related events such as, rain, sleet, and snow and night time driving are times when extreme caution needs to be exercised.
- Realize that you can become disoriented even in the best conditions—when disoriented, stop and request assistance.

Click To Continue

Training Modules

Airport Basics

Airport Rules



Definitions



Airport
Marking Aids



Authorized Ground
Vehicles



Learn The
Burlington Airport



Runways

- A defined rectangular area on an airport prepared for the landing and takeoff run of aircraft along its length.
- Runway in Use or Active Runway
 - Any runways currently being used for takeoff or landing.



Click To Continue

Taxiways

- Those parts of the airside designated for the surface maneuvering of aircraft to and from the runways and aircraft parking areas.



Click To Continue

Apron or Ramp

- Apron or Ramp
 - A defined area on the airport intended to accommodate aircraft for the purposes of parking, loading and unloading passengers or cargo, refueling, or maintenance.



Click To Continue

Training Modules

Airport Basics



Airport Rules



Definitions



Airport
Marking Aids

Authorized Ground
Vehicles



Learn The
Burlington Airport



Definitions

- Accident
 - A collision between one aircraft or vehicle and another aircraft, vehicle, person, or object that results in property damage, personal injury, or death.



[Click To Continue](#)

Definitions

- Air Operations Area (AOA)
 - Those areas which encompass the runways, taxiways, and other areas of the airport utilized for taxiing, takeoff, landing of aircraft including ramps and parking areas.



Click To Continue

Definitions

- Airfield Service Vehicles
 - Those vehicles operated by the airport routinely used for services, maintenance and construction on the Airport Operations Area.



[Click To Continue](#)

Definitions

- Foreign Object Debris (FOD)
 - Debris that can cause damage to aircraft engines, tires, or skin from rocks, trash, or the actual debris found on runways, taxiways, and aprons.



[Click To Continue](#)

Definition

- Jet Blast
 - Jet engine exhaust or propeller wash (thrust stream turbulence).



[Click To Continue](#)

Definitions

- **Movement Area**
 - The runways, taxiways, and other areas of an airport that aircraft use for taxiing, takeoff, and landing, exclusive of loading ramps and parking areas.
- **Non- Movement Area**
 - Aircraft parking areas, loading ramps and maintenance ramps. Most drivers on the AOA are only authorized in the non-movement area.

Click To Continue

Definitions

- Secured Airport Area
 - Areas of the airport posted to prohibit or limit entry or access by the general public. At BRL the secure area is all areas inside of the fence.
- Uncontrolled Airport
 - An airport without an operating airport traffic control tower or when airport traffic control tower is not operating.
 - Burlington is an uncontrolled airport.



Click To Continue

Definitions

- UNICOM
 - A non-Federal communications facility that may provide airport information at certain airports. Locations and frequencies of UNICOMs are shown on aeronautical charts and publications.
 - Burlington's UNICOM is 123.0
 - It shares the frequency with the CTAF (common traffic advisory frequency).

Click To Continue

Training Modules

Airport Basics



Airport Rules



Definitions



Airport
Marking Aids



Authorized Ground
Vehicles

Learn The
Burlington Airport



Authorized Ground Vehicles

- Ground vehicles, authorized by the Airport Director or designated representative to operate on the movement areas and safety areas at the Southeast Iowa Regional Airport are limited only to those vehicles necessary for Airport Operations.



[Click To Continue](#)

Authorized Ground Vehicles

- These vehicles include:
 1. Southeast Iowa Regional Airport authorized vehicles equipped with a flashing beacon or strobe light and radio for communication.
 2. Federal Aviation Administration (FAA) vehicles.
 3. Fixed Base Operator (FBO) vehicles, to include mobile fuel trucks (**limited to Ramp Areas, Hangar and Maintenance Hangar areas**), tractors, tugs and other support vehicles as needed.

[Click To Continue](#)

Authorized Ground Vehicles

4. Airline tugs, tractors and other motorized vehicles. These vehicles are limited to the ramp areas unless an operational duty (i.e. deicing, towing, etc...) requires use of a Movement Area.
5. Construction vehicles operating under airport procedures for construction purposes.
6. Any other vehicle requiring access to movement areas and safety areas when escorted by a properly equipped airport vehicle.



Click To Continue

Training Modules

Airport Basics



Airport Rules

Definitions



Airport
Marking Aids



Authorized Ground
Vehicles



Learn The
Burlington Airport



Airport Rules

- Rules:
 - Any person with a need to operate a ground vehicle must possess a valid state driver's license, vehicle liability insurance and must complete the SIRAA Airport Driver's Training Program.
 - No person shall operate a vehicle or other equipment within the airside under the influence of alcohol or any drug that impairs, or may impair, the operator's abilities.
 - Vehicle operators shall not operate vehicles in a reckless or careless manner.
 - Each vehicle operator is responsible for the activities of each vehicle passenger.

[Click To Continue](#)

Airport Rules

- Rules:
 - No person shall park a vehicle in an aircraft parking area, safety area, or in a manner that obstructs or interferes with operations in the aircraft movement area or apron area.
 - No fuel truck shall be brought into, stored, or parked within 50 feet of a building. Fuel trucks must not be parked within 10 feet from other vehicles.
 - Each vehicle operator using an airport perimeter (security) gate shall ensure the gate closes behind the vehicle prior to leaving the vicinity of the gate and ensure no unauthorized vehicles or persons gain access to the airside while the gate is open.

[Click To Continue](#)

Airport Rules

- Foreign Object Debris (FOD)
 - FOD is any debris on the airfield that can cause damage to an aircraft. A few examples are tools, plastic packing material, cans, rocks, or discarded parts from maintenance activities. Any of these objects can shed internal parts if sucked into a jet engine and can become deadly projectiles. It is crucial that everyone on the airfield be alert to FOD and remove it immediately.

Click To Continue

Airport Rules

- Only persons who have completed the SIRAA ID process and holds a current BRL ID have access to work in or pass through the Airport Restricted Area (red box) located on the terminal ramp. If the Operator does not possess a BRL ID, they must be escorted by approved airport staff.
- Moving aircraft shall have the right-of-way over vehicular traffic.
- Vehicular traffic should not operate between parked aircraft and loading gates, or other buildings.

[Click To Continue](#)

Airport Rules

Operators of vehicles involved in an accident on the airport that results in injury to a person or damage to an aircraft, airport property, or another vehicle shall:

1. Immediately stop and remain at the scene of the accident.
2. Render reasonable assistance, if capable, to any person injured in the accident.
3. Report the accident to the airport director or airport operations department, immediately and before leaving the scene, if possible.
4. Provide the following to any responding airport personnel: name and address, state driver's license, and any information such personnel need to complete a motor vehicle accident report.



Click To Continue

Airport Rules

- Speed Limits
 - All vehicles operating in the aircraft Non-Movement Areas are restricted to 15 MPH except when towing equipment, then the speed is restricted to 5 MPH or as safe operations will permit.
 - The speed limit for Movement Areas is restricted to the safe driving speed of the vehicle.

Click To Continue

Liability and Training for Ground Vehicle Operations

1. Ground Vehicles at the Southeast Iowa Regional Airport are required to operate under the procedures established by the FAA and Southeast Iowa Regional Airport. The airport director or his/her designated representative is responsible for training airport employees and employees of other agencies authorized to operate ground vehicles.
2. Employers of other agencies authorized to operate ground vehicles will be required to sign a form at the Airport Office assuming full responsibility for their employee's actions, or failure to act. Consequently, the employee will be responsible for any fines levied by the FAA, Southeast Iowa Regional Airport, or other organizations relating to the operation of ground vehicles on the Airport Operations Area (AOA).

[Click To Continue](#)

Liability and Training for Ground Vehicle Operations

3. Employees, Tenants, Contractors, and others must sign verifying that they have successfully passed the driver's test and will abide by the rules and regulations of the Southeast Iowa Regional Airport.
4. **All vehicles operating in the movement area, (runways and taxiways) must be equipped with a flashing beacon and should be identified by company logo / name on the exterior of the vehicle; or escorted by airport staff in a properly equipped vehicle.**
5. Access to the AOA will be controlled by the Airport Operations Department. Pedestrians and vehicle operators will be allowed access to the airfield via gate cards or keys. Each employee, tenant, and contractor will be supplied a key/gate card as needed.

[Click To Continue](#)

Liability and Training for Ground Vehicle Operations

6. All vehicles entering the AOA must meet current city vehicle insurance requirements in case of accident or injury. The Southeast Iowa Regional Airport will not be held responsible for any damage to you or other property due to driver/pedestrian negligence.
7. All pedestrians and vehicle operators that have access to the Movement Area are required to attend annual recurrent training. This training will refresh current drivers with the policies and practices in use at the Southeast Iowa Regional Airport. Records will be kept at the Airport Office in accordance with FAA Part 139 recordkeeping standards.

[Click To Continue](#)

Consequences of Non-Compliance

Enforcement of the ground vehicle regulations to the airport employees, tenants, and contractors, shall be handled by the Airport Director or his/her designee. They shall take appropriate enforcement action depending on the nature and severity of the offense.

- Oral reprimand
- Written reprimand or warning letter
- Recurrent/Remedial Training
- Suspension/Revocation of driver's privileges
- Fines



Click To Continue

Training Modules

Airport Basics



Airport Rules



Definitions



Airport
Marking Aids

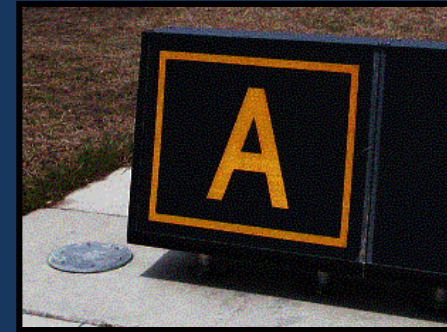
Authorized Ground
Vehicles



Learn The
Burlington Airport



Airport Marking Aids



[Click To Continue](#)

Airport Marking Aids

- In order to maintain safety, pilots and ground vehicle operators alike need to know their position on the airport at all times.
- Airport signage and markings help you to keep track of where you are.

Click To Continue

Runways

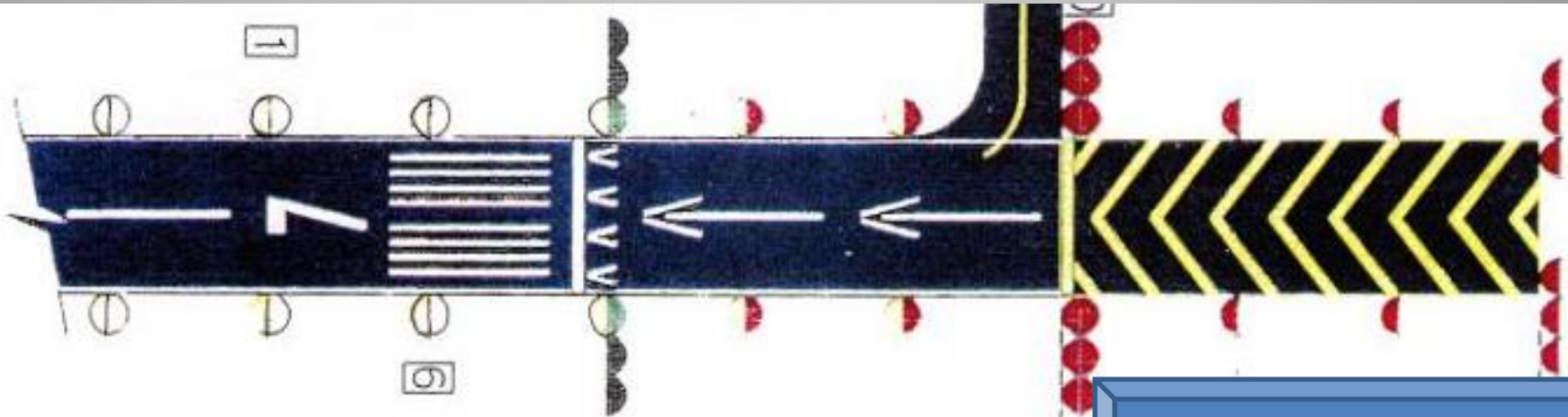
- If a runway is named 36, you are looking 360° degrees, or straight north.
- If a runway is named 12, you are facing 120° degrees, just south of east.



Click To Continue

Runways

- Runways are labeled with **WHITE PAINT**:
- Use extreme caution when on or near a runway
- Remember when on a runway you should:
 - Always have a flashing light on your vehicle
 - Always announce on UNICOM 123.0 that you entering or exiting a runway



Click To Continue

Painted Markings

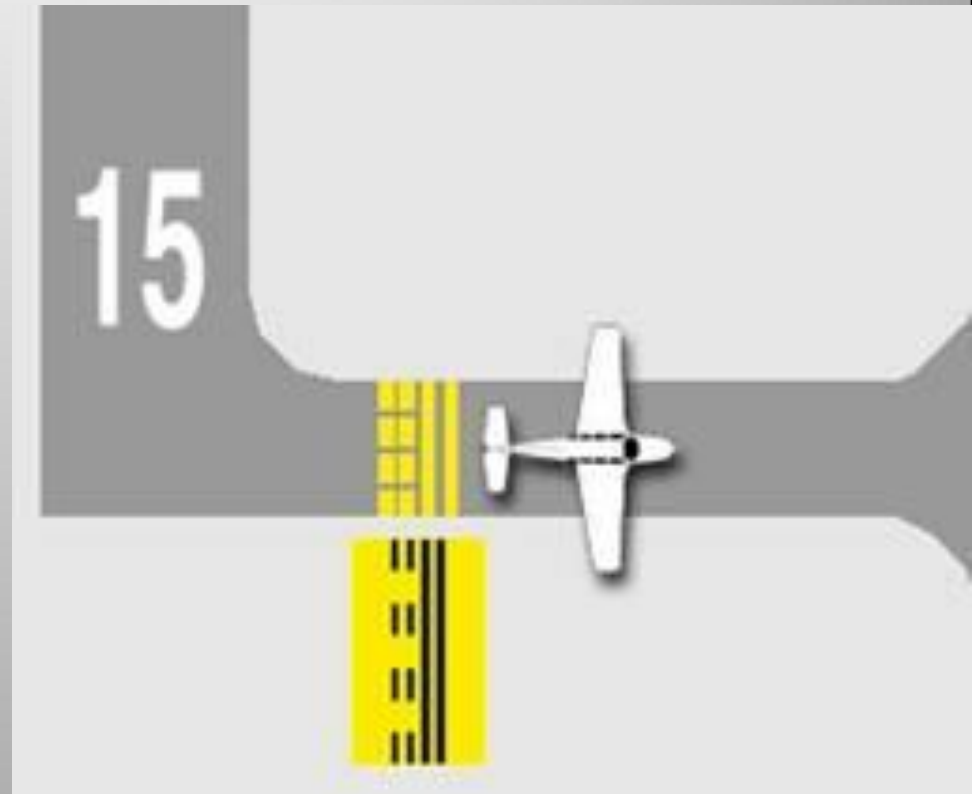
- Taxiways – used for ground movement
 - Have yellow center line strips



[Click To Continue](#)

Hold Short Lines

- Runway Boundary Marking
- If the solid lines are closest to you, you are approaching a runway
- If the dashed lines are closest to you, you are exiting a runway



Click To Continue

Mandatory Instruction Signs

- Red background with white inscription.
- Entrance to a runway.
- Red should get your attention!
 - Use extreme caution, you are about to enter a runway!



Click To Continue

Location Signs

- Black background, yellow border, yellow inscription.
- This is where you are.

I am on taxiway
T (Tango)!

I am on taxiway T (Tango)
and approaching runway
18 and 36!



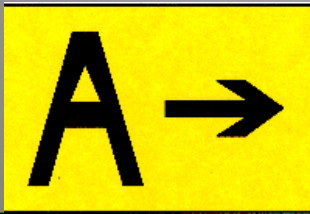
Click To Continue

Direction Signs

- Yellow background with black inscription.
- Tells you which way to go to stay on a taxiway

I am on taxi A3 (Alpha 3)
and I can go left or right on
A (Alpha)!

Taxiway A (Alpha)
goes to the right!



Click To Continue

Information Signs

- Yellow background and black inscription.

I can't see the other end of the runway. I should announce before I enter the runway!



Click To Continue

Hold Short Line

- This is what the hold short line will look like if you are on the taxiway, facing the runway.
- Notice the lines closest to me are solid.
 - This means stop and announce before you enter the runway.
 - Make sure you look both ways for traffic and listen on the radio for any announcing “Burlington Traffic” that may be using the runway.



Click To Continue

Notice the Difference?

- Left Picture
 - **Exiting** a runway
 - Dashed lines are closest
- Right Picture
 - **Entering** a Runway
 - Solid lines are closest



Click To Continue

Training Modules

Airport Basics



Airport Rules



Definitions



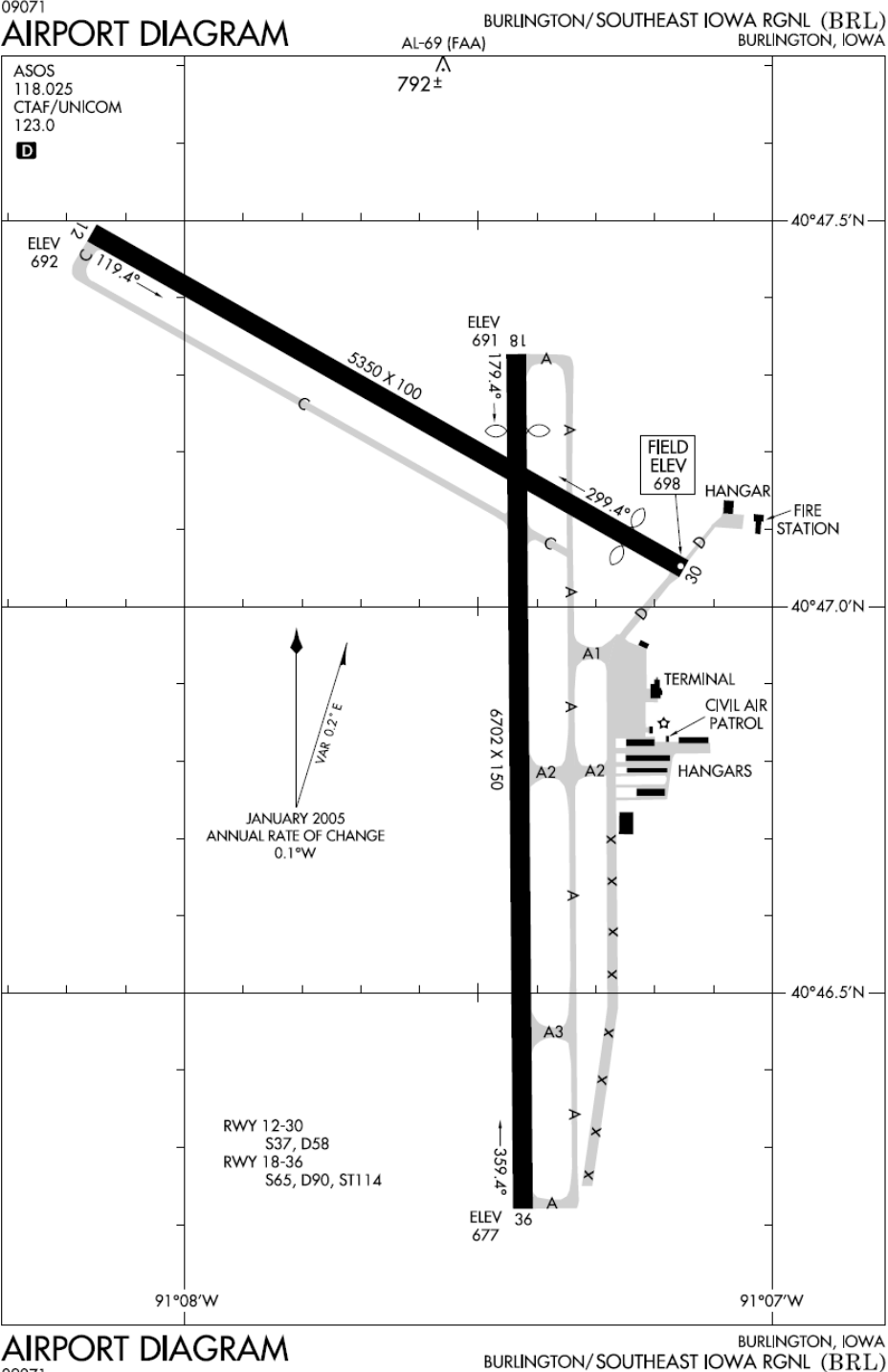
Airport
Marking Aids



Authorized Ground
Vehicles

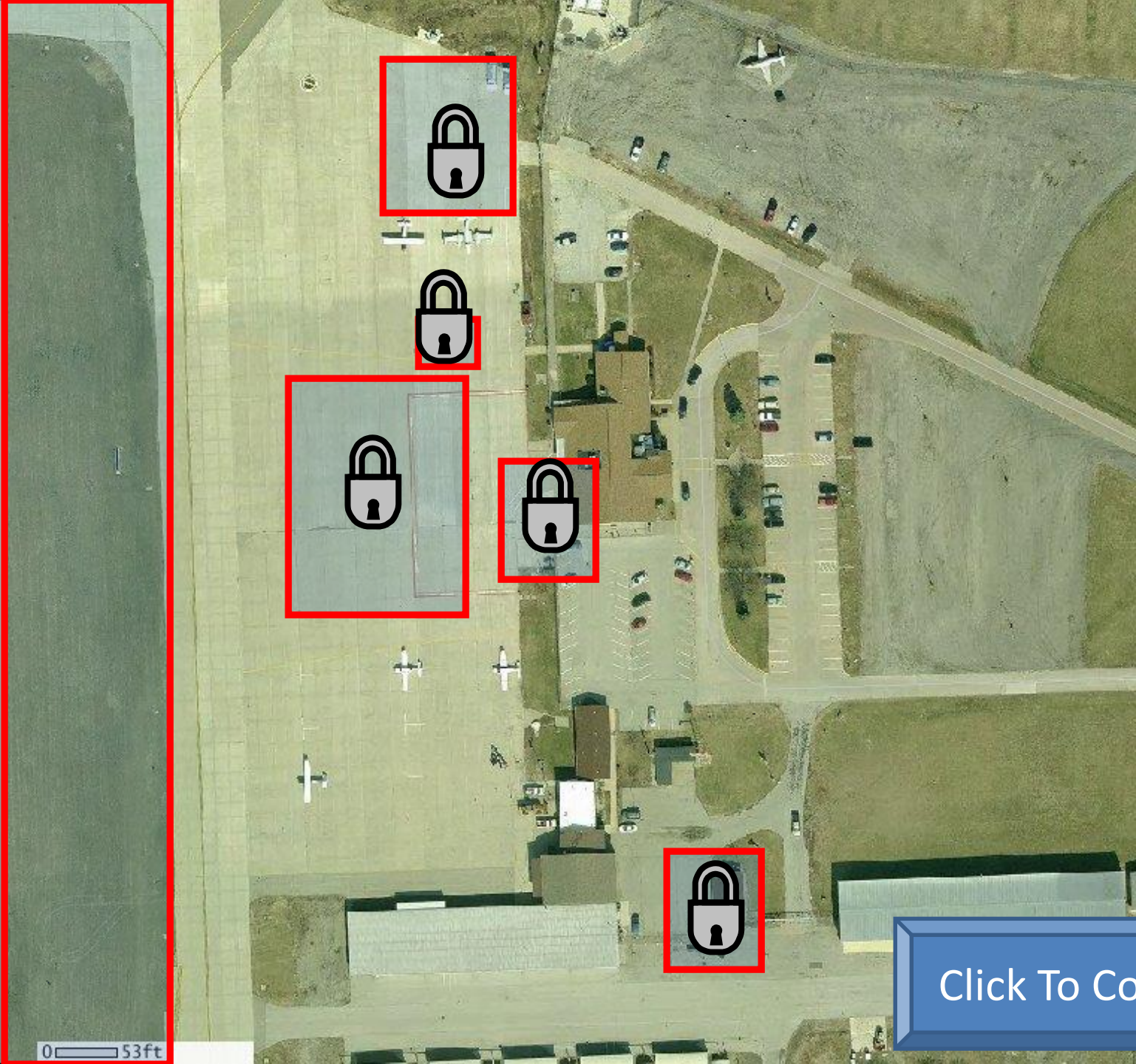


Learn The
Burlington Airport



- This is Burlington's Airport Diagram.
- Get familiar with the location of the runways, taxiways, and ramp.
- It is a good idea to have an airport map with you at all times when driving on the airport.

Click To Continue



0 53ft

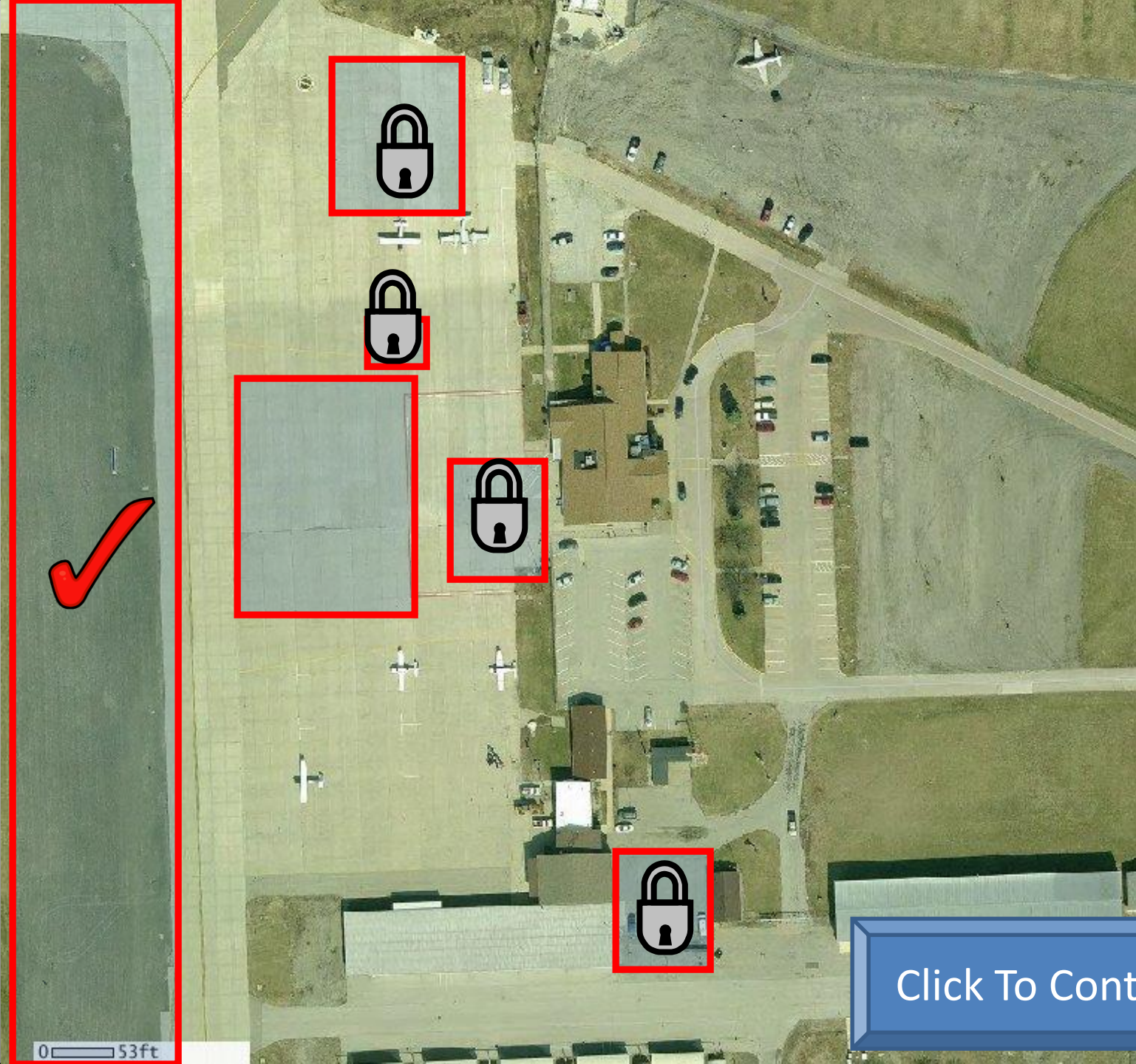
Click To Continue



Movement Area

- All runways and taxiways are considered part of the movement area.
- You must have a flashing light and make radio calls when using the movement area.

Click To Continue

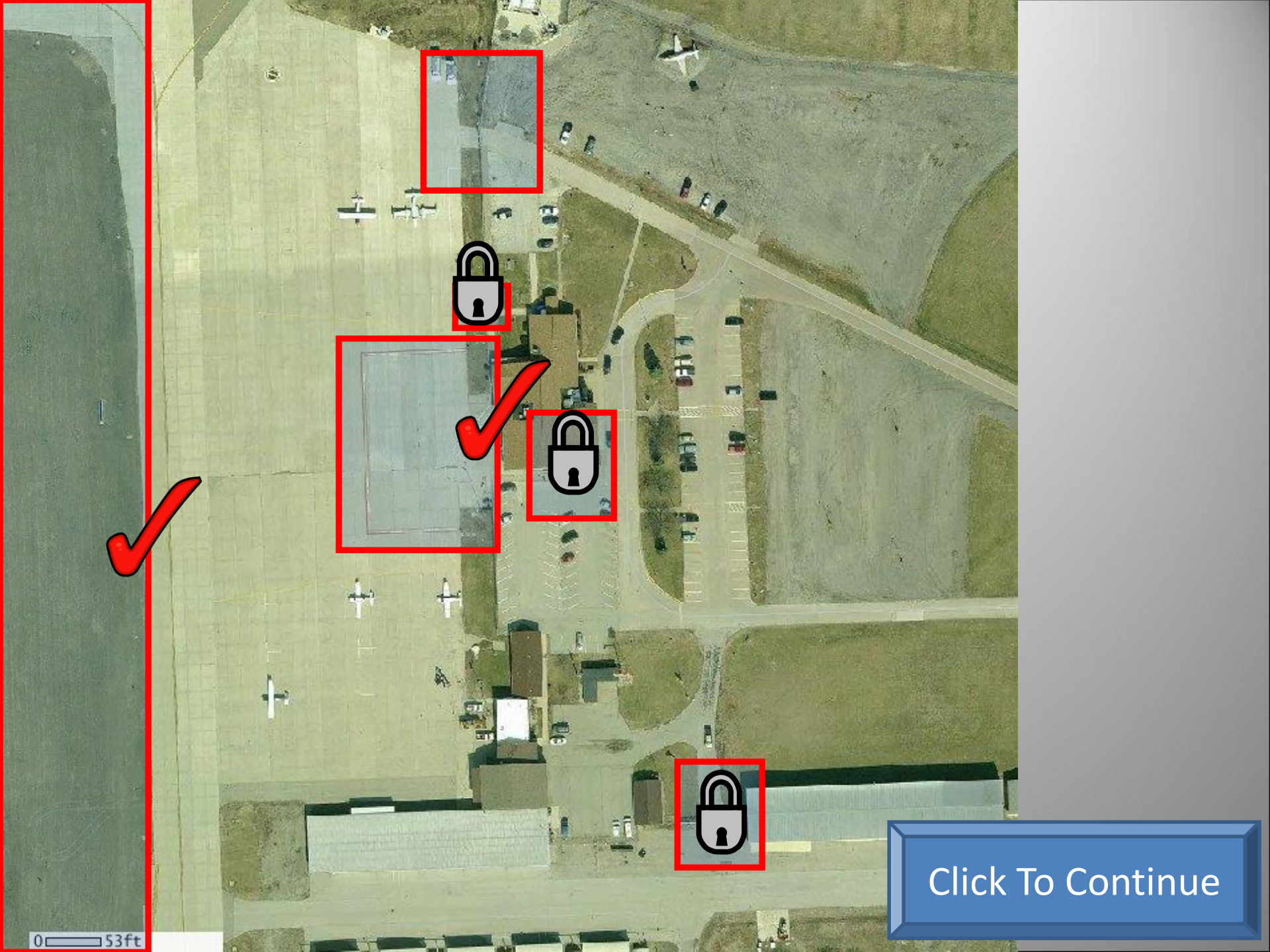


Click To Continue

“The Red Box”

- This is the airline’s space, it is a restricted area
- You should not go into the red box unless:
 - You are a passenger on the airline
 - You work for the airline
 - You have special authorization
 - You have an escort

Click To Continue



0 53ft

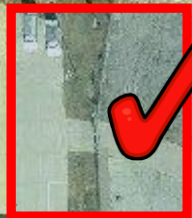
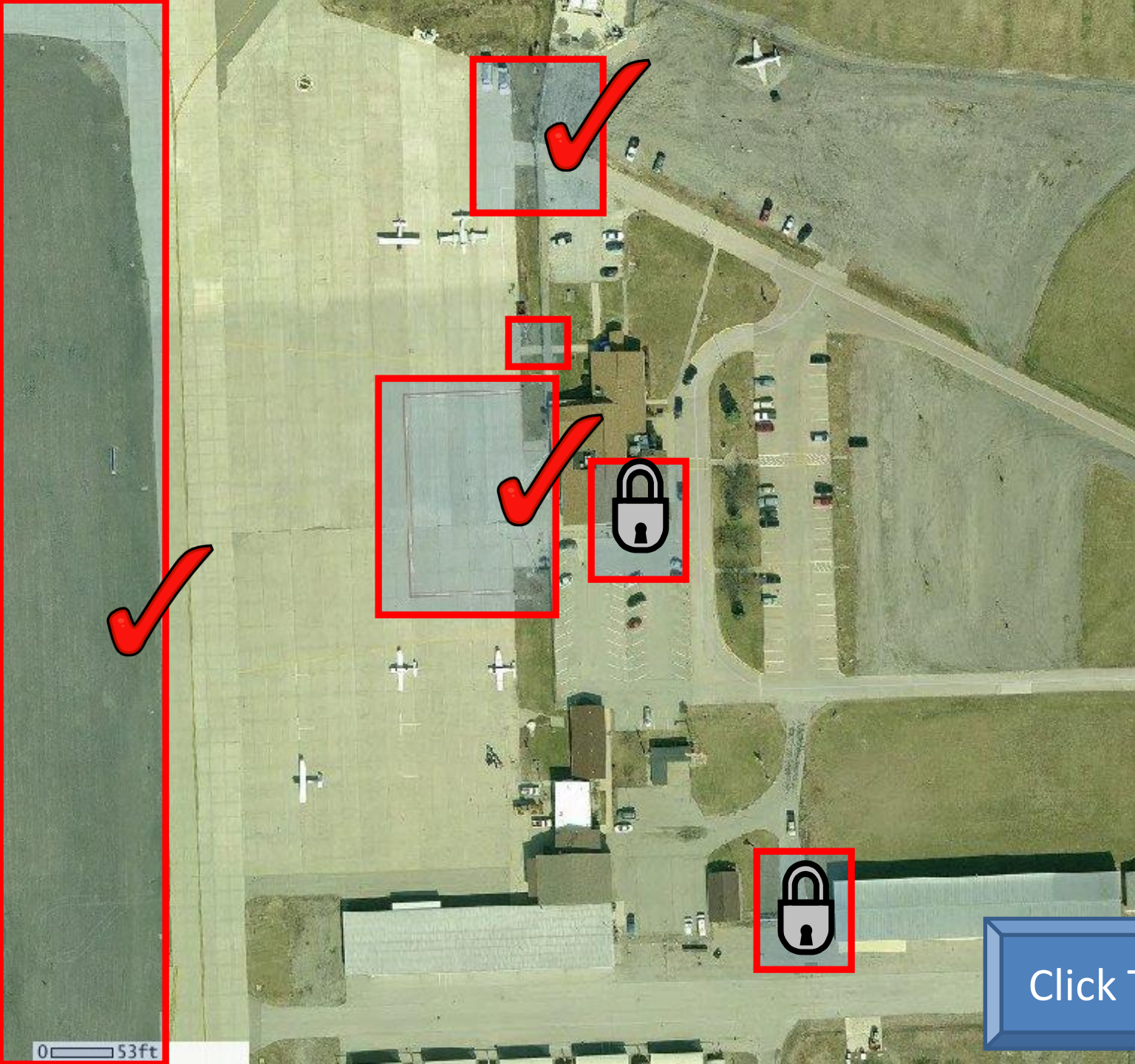
Click To Continue

Gate E-4

- This gate opens electrically with a remote.
- When using the gates, remember to drive through, then stop on the other side, barricading the door with your vehicle.
 - This way no one can “piggyback” in.



[Click To Continue](#)



0 53ft

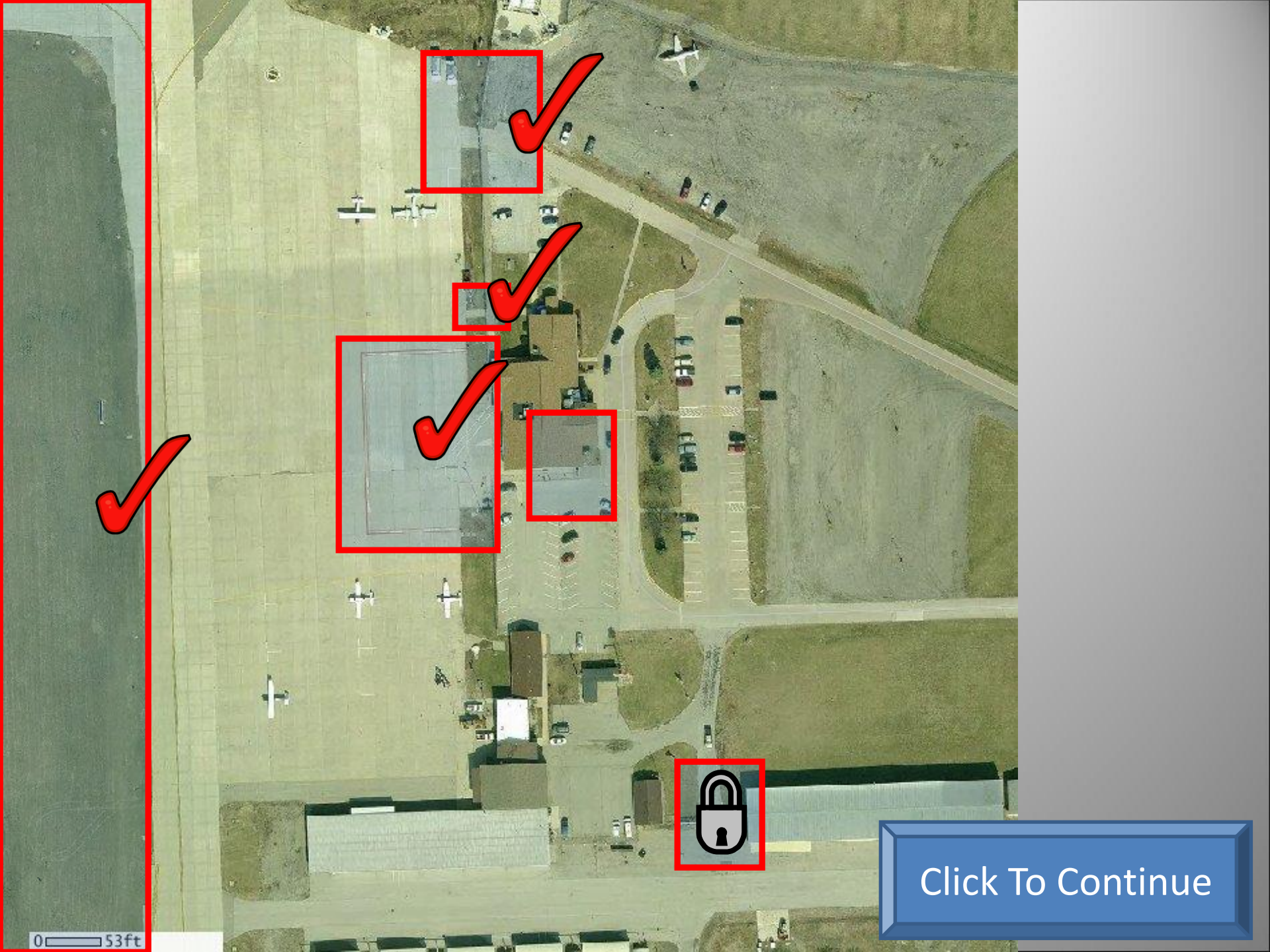
Click To Continue

The FBO Door



The sign on the fence has the access code that will be used to re-gain access to the airfield side of the airport.

[Click To Continue](#)



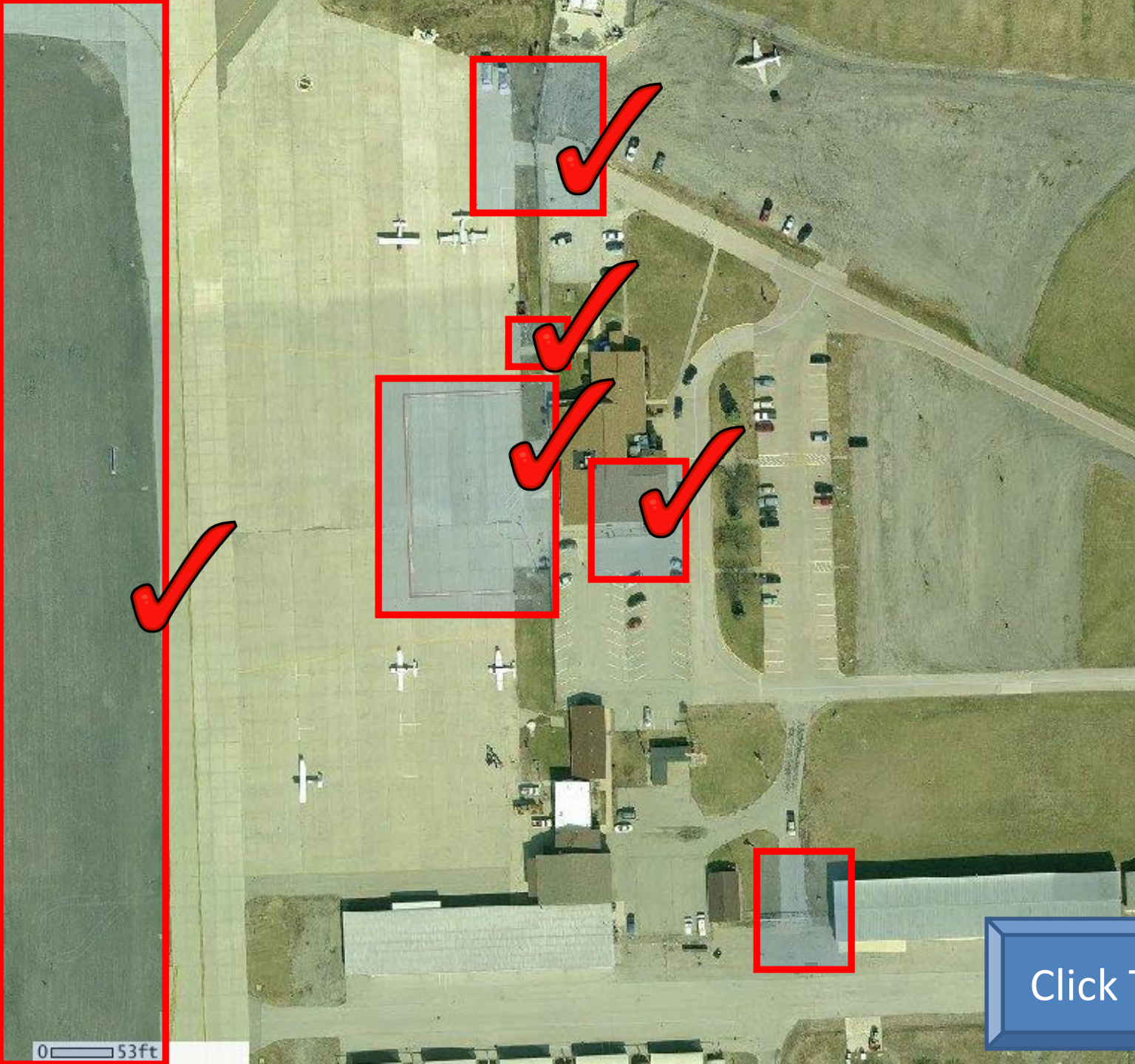
Click To Continue

Gate E-7

- This gate accesses the commercial airline area.
- When using these doors, make sure it shuts completely behind you



[Click To Continue](#)



[Click To Continue](#)

Hangar Gate



- These gates close with a timer.
- Make sure you drive in promptly after the gate opens.
- It will shut even if your vehicle is not out of the way.

[Click To Continue](#)

Radio Communication Procedures

- Tune into UNICOM 123.0 using a two way radio.
- Know and use proper phraseology. (Refer to Airport Vehicle Operator Safety Study Guide)
- Use extreme caution when operating on a runway, taxiway or when crossing an intersection.
- Remember, Burlington is a non-controlled airport, so your communication is mainly with other Aircraft.

[Click To Continue](#)

Radio Communication

- Using your airport map or Airport Runway Safety Information announce your position when moving from a taxiway to a runway and once you are clear of all runways.
- Burlington taxiways are: A1, A2, A3, Charlie, Alpha and Delta
- Burlington Runways are: 1 2, 3 0, 1 8 and 3 6

Click To Continue

Announce Your Position

Examples:

- “Burlington Traffic, Construction Personnel, entering Runway 3 6, Burlington”
- “Burlington Traffic, Airport Maintenance, holding short of Runway 1 8, Burlington”
- “Burlington Traffic, Airport Maintenance, clear of all active runways, Burlington”



Click To Continue

The End!!



Driver Training
Test